



## Steel Warehouse Logistic Trolley Wire Mesh Storage Cage for Flexible Material Storage

### Basic Information



### Product Specification

- Model NO.: QF-Wire Container
- Material: Steel
- Structure: Foldable
- Type: Cage
- Mobility: Mobile
- Height: 0-5m
- Weight: 100-1500
- Closed: Open
- Development: Conventional
- Serviceability: Common Use
- Color: Customized
- Lead Time: 20 Days
- Raw Material: Mild Steel
- Surface Treatment: Powder Coating
- Transport Package: Standard Export Packing



### More Images



Our Product Introduction

for more products please visit us on [warehouse-rackings.com](http://warehouse-rackings.com)

## Product Description

### Product Description



**Wire mesh containers**, also known as wire baskets or wire cages, are versatile storage and organization solutions made from woven metal wire.

The metal wire used is often galvanized steel or stainless steel, providing durability and corrosion resistance. The mesh openings can vary in size from small fine mesh to larger openings.

Wire mesh containers come in many different shapes, sizes, and configurations such as rectangular, square, round, or stackable. Common sizes range from small desktop organizers to large industrial-scale bins.

They are commonly used for storage, display, and transportation purposes in a variety of settings like warehouses, retail stores, workshops, kitchens, and homes.



Loading capacity (kg)	Size (mm)	Wire diameter (mm)	Weight (kg)
200	800*600*640	4.8	21
300	1000*800*840	4.8	28
400	800*600*640 / 1000*800*840	4.8/5.2	23
500	1000*800*840 / 1200*1000*890	4.8/5.2	35/36
600	800*600*640 / 1000*800*840	5.4/5.6	26/38
700	1200*1000*890	4.8/5.2	40/43
800	800*600*640 / 1000*800*840	5.6/5.8	28/41
900	1200*1000*890	5.6	47
1000	800*600*640 / 1000*800*840	5.8/6.0	30/44
1200	1000*800*840 / 1200*1000*890	5.6/6.0	45/54
1300	1200*1000*890	5.8	56
1500	1200*1000*890	6	60

### Detailed Photos

## Features

## FEATURES

Name Plate  
customized branding


Your Logo  
Here



## FEATURES

Forklift Sleeves  
stability and safety

Welded Base  
strong and durable



## FEATURES

Name Plate  
customized branding

Half Drop Gate  
easy access



## FEATURES

Name Plate  
customized branding

Half Drop Gate  
easy access



**Customized Options**

## FEATURES

Name Plate  
customized branding

Half Drop Gate  
easy access

Hinged Lid  
secure locking



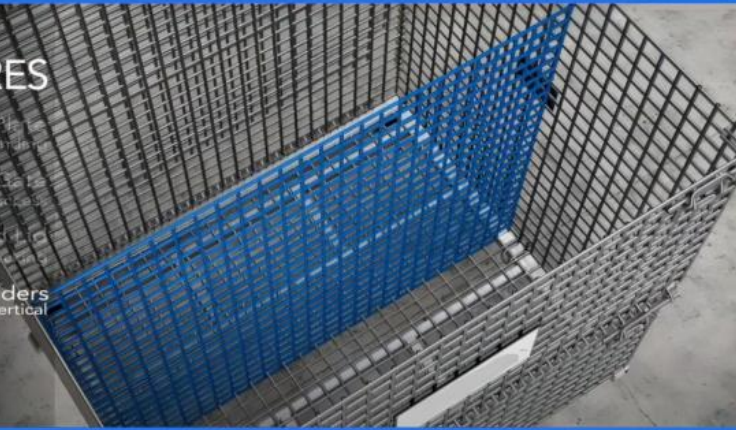
## FEATURES

Name Plate  
customized branding

Half Drop Gate  
easy access

Hinged Lid  
secure locking

Dividers  
horizontal & vertical



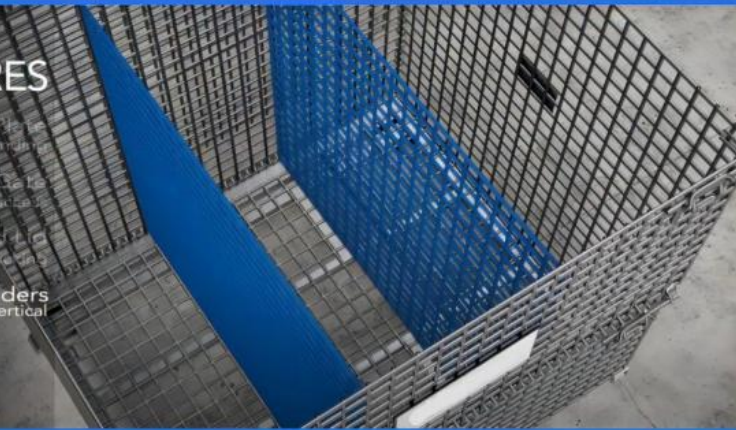
## FEATURES

Name Plate  
customized branding

Half Drop Gate  
easy access

Hinged Lid  
secure locking

Dividers  
horizontal & vertical



## Options of Base

## FEATURES

Fork Stirrup  
stability and safety

Heavy Feet  
reinforced design

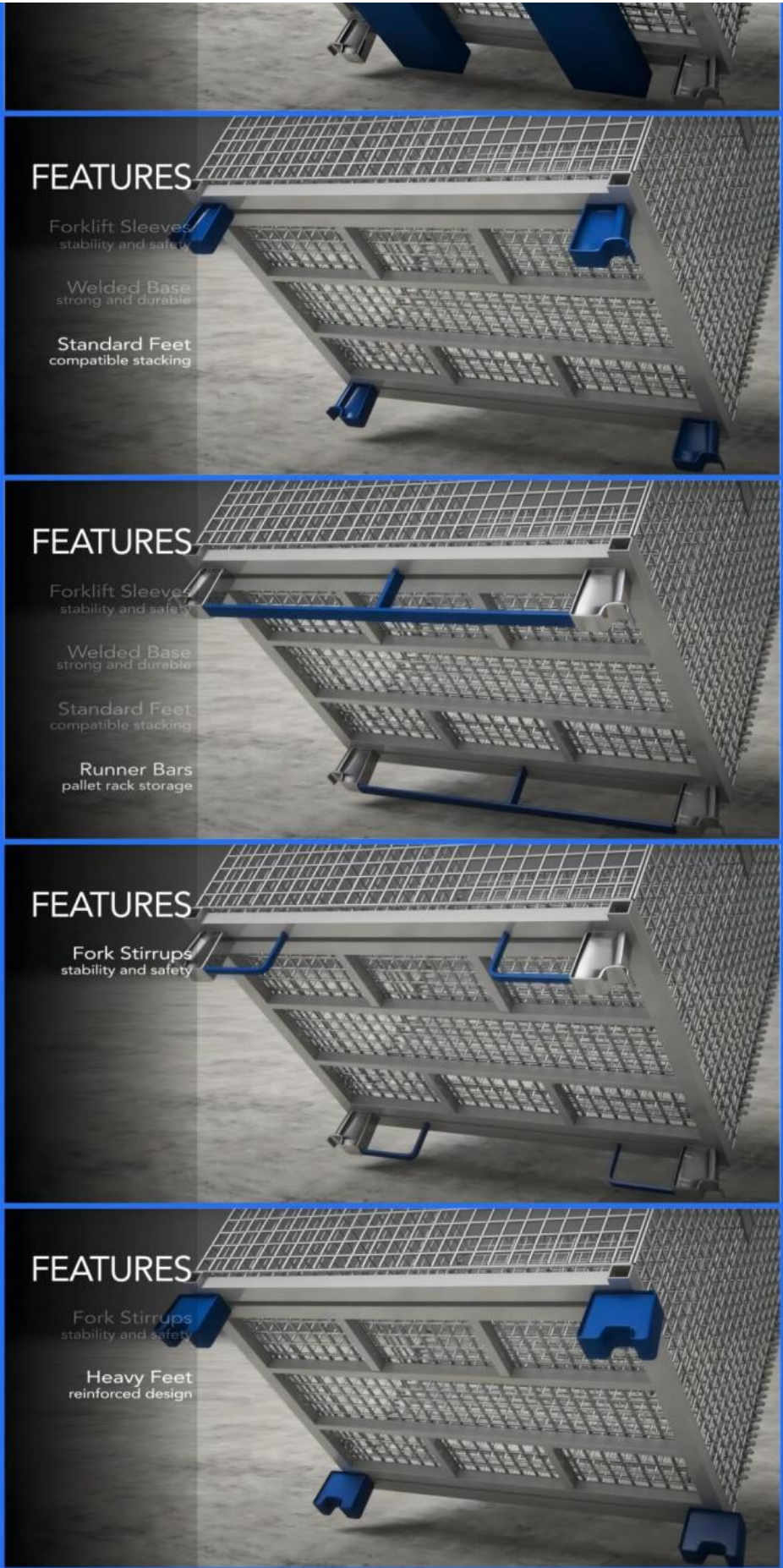
Casters  
rigid/swivel 5" x 2"



## FEATURES

Forklift Sleeves  
stability and safety





**FEATURES**

- Forklift Sleeves  
stability and safety
- Welded Base  
strong and durable
- Standard Feet  
compatible stacking

**FEATURES**

- Forklift Sleeves  
stability and safety
- Welded Base  
strong and durable
- Standard Feet  
compatible stacking
- Runner Bars  
pallet rack storage

**FEATURES**

- Fork Stirrups  
stability and safety

**FEATURES**

- Fork Stirrups  
stability and safety
- Heavy Feet  
reinforced design

**Options of Color**

## FEATURES

Fork Stirrups  
stability and safety

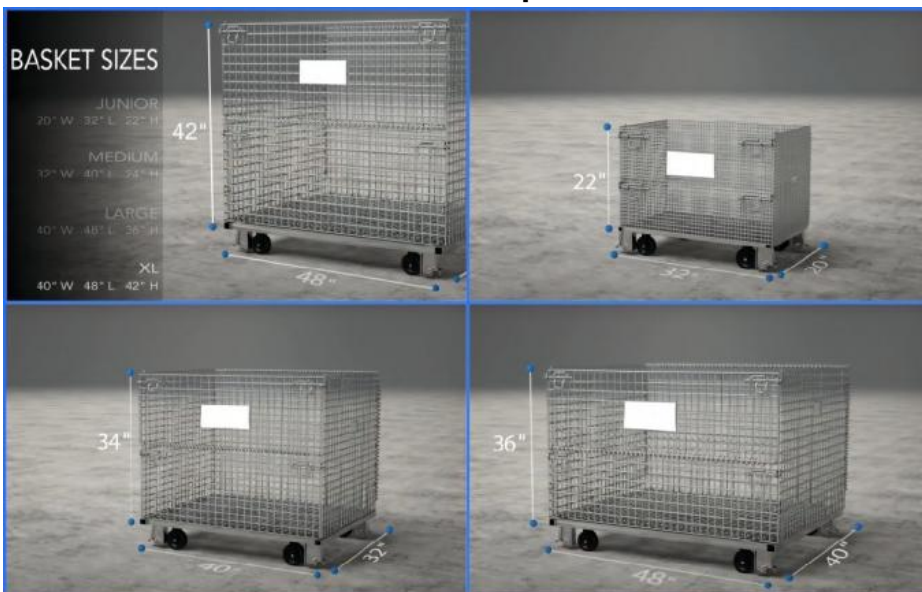
Heavy Feet  
reinforced design

Casters  
rigid/swivel 5" x 2"

Galvanized Finishing  
electro static (standard)  
hot dipped (optional)  
powder coat (optional)

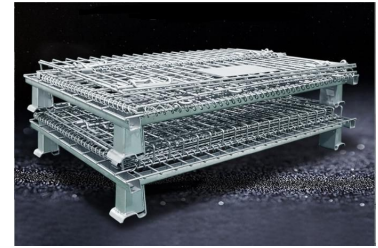
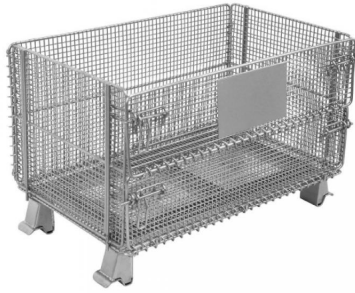


## Options of Size



**If you have more specific need, don't hesitate, just contact us!**

Our Advantages

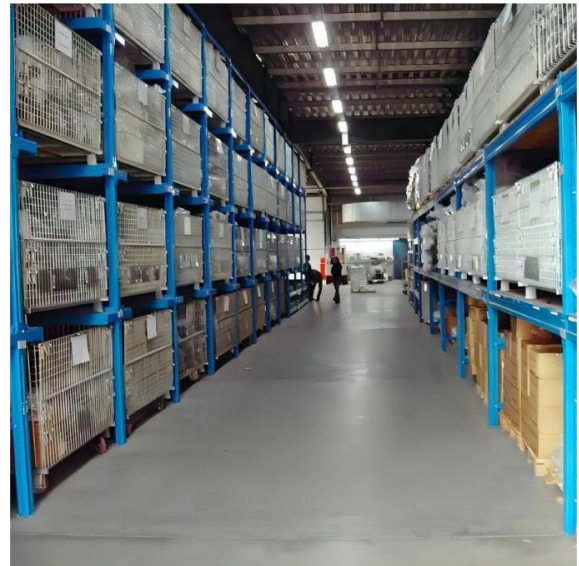


Excellent steel is welded by cold rolled hardening, with high strength and high loading capacity. Unified specifications, fixed capacity, storage of goods at a glance, easy to inventory inventory. Galvanized surface, beautiful and anti-oxidation, and long service life. Adopt international standards, which can be used together with containers to effectively improve the utilization rate of space. It can stack four layers with each other to achieve three-dimensional storage. It can stack four layers with each other to achieve three-dimensional storage. Folding structure, with low recovery cost, is an alternative product of wooden packaging box.



Surface environmental protection treatment, sanitation and immunization, turnover, storage and recycling do not pollute the environment. Wheels can be installed at the bottom, and the internal turnover of the factory is extremely convenient. Efficient operation can be carried out with forklift truck, ground cow, lift machine, crane and other equipment.

#### Success Case



#### Company Profile

**Welcome to visit our company**

# Jiangsu Qifei Intelligent Storage Equipment Co., Ltd



Established in 2020, is one of the leading manufacturer specialized in industrial warehouse storage equipment.



Main products are heavy/medium/light duty rack, cantilever rack, mezzanine floor, drive in rack, and so on.



We aim to provide cost-effective and space utilization storage solutions for all customers worldwide



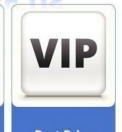
## WHY CHOOSE US



Customization



Free Design



Best Price

## Co-operation Process



## FAQ

Q: Are you manufacturer or trading company?

A: We are experienced manufacturer in the warehouse storage industry.

Q: How is your delivery time?

A: Generally, it is within 20 days against formal order and deposit. It also depends on other factors such as order quantity.

Q: What is the payment term?

A: T/T 30% as deposit, and 70% before delivery. We'll show you the photos of the products and packages before you pay the balance.

Q: What is your terms of delivery?

A: EXW, FOB

Q: Are samples available?

A: Yes, We can supply the sample if we have ready parts in stock, but the customers have to pay the sample cost and the courier cost.

Q: What is the minimum order quantity?

A: Generally, MOQ is 10sets.

Q: Can I make my own brand and designed products?

A: Yes, we do both OEM and ODM, so you can make your own product with your own logo.



Q: Where is your factory? Can I visit it?

A: Our factory located in Nanjing, Welcome to visit our factory. We can arrange pick-up from the airport or train station for you.

Q: What is the material being used for your products?

A: Mild steel Q235.

Q: I don't have drawing or picture available for the products, could you design it for me?

A: Yes, we can make the best suitable design for you but need to know more details.

Q: Do I get any guarantee from your company?

A: 3 years warranty

Q: How do you make our business long-term and good relationship?

A: Quality makes trust and reputation, plus competitive price to ensure our customers benefit ;



**Jiangsu Qifei Intelligent Storage Equipment Co., Ltd.**



+86-15161451461



sharonyan@qifeirack.com



warehouse-rackings.com

Add: #739 Dixiu Road Jiangning District Nanjing China